

## SSFA comparison

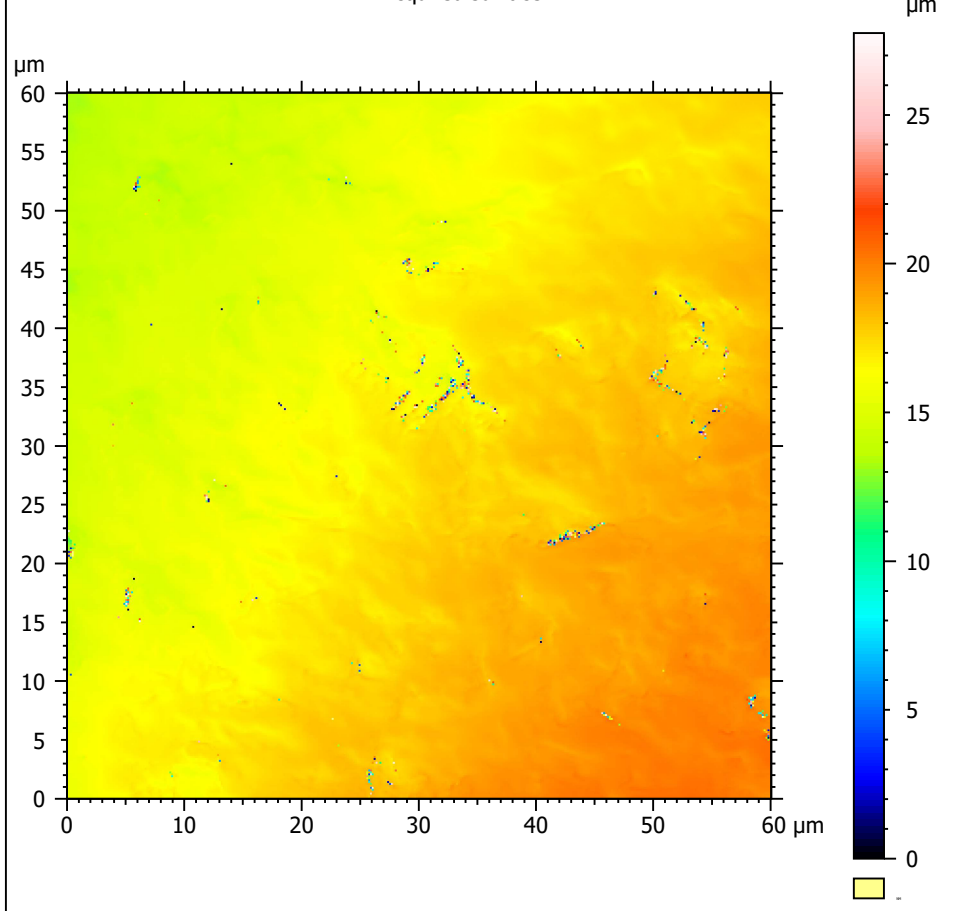
Template to process all surfaces acquired with the Nanofocus  $\mu$ surf Custom with the 100x/0.80 objective.

### A. Processing

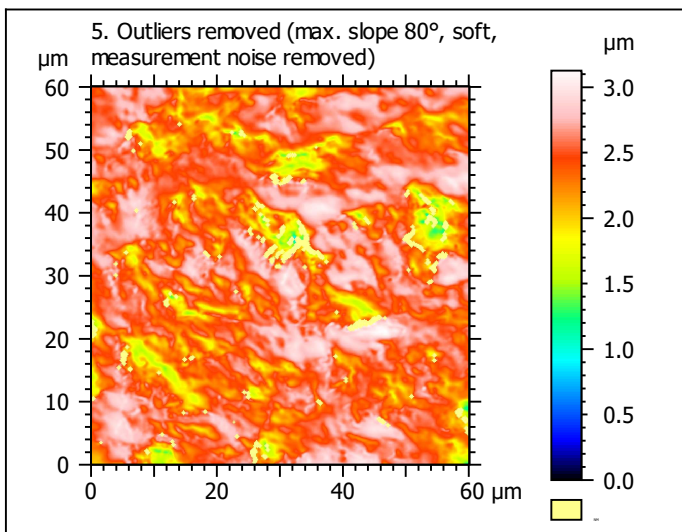
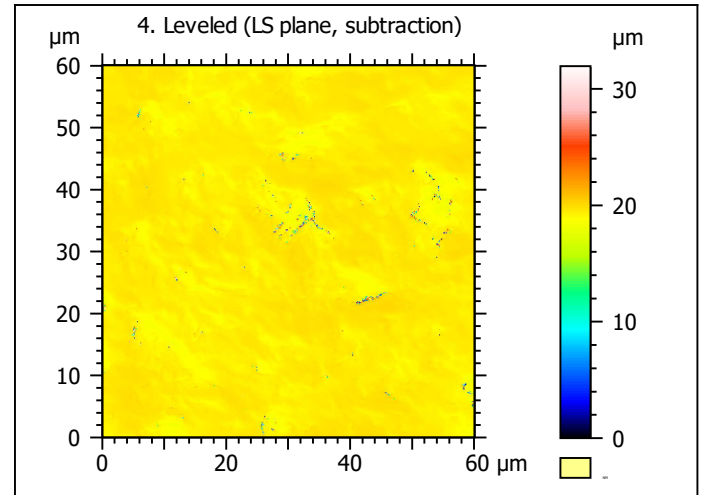
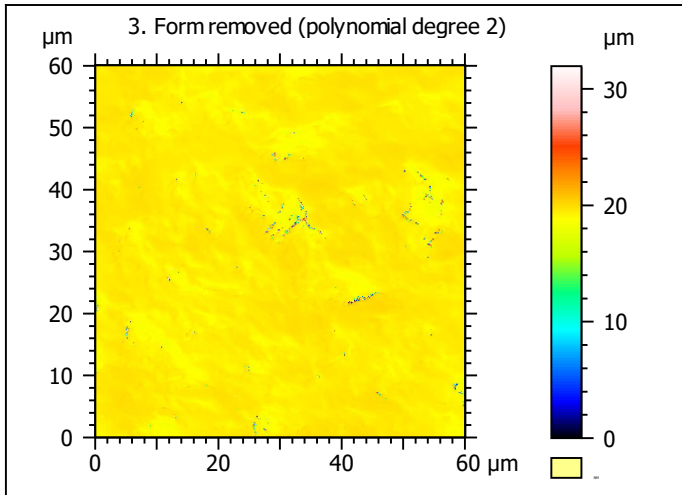
#### Identity card

|                  |   |        |  |
|------------------|---|--------|--|
| Name:            | capor_2CC5B1_txP4_#1_1_100xL_1  |        |  |
| File path:       | D:\Data\3Ddata\SSFA\GuineaPigs\Original surfaces\capor_2CC5B1_txP4_#1_1_100xL_1.nms |        |  |
| Studiable type:  | Surface   |        |  |
| Axis:            | X   |        |  |
| Length:          | 60.06   | μm     |  |
| Size:            | 370   | points |  |
| Spacing:         | 0.1628  | μm     |  |
| Axis:            | Y   |        |  |
| Length:          | 60.06   | μm     |  |
| Size:            | 370   | points |  |
| Spacing:         | 0.1628  | μm     |  |
| Axis:            | Z   |        |  |
| Layer type:      | Topography  |        |  |
| Length:          | 27.75   | μm     |  |
| Size:            | 63311   | digits |  |
| Spacing:         | 0.0004383   | μm     |  |
| NM-points ratio: | 0.03068 % (42 Pts)  |        |  |

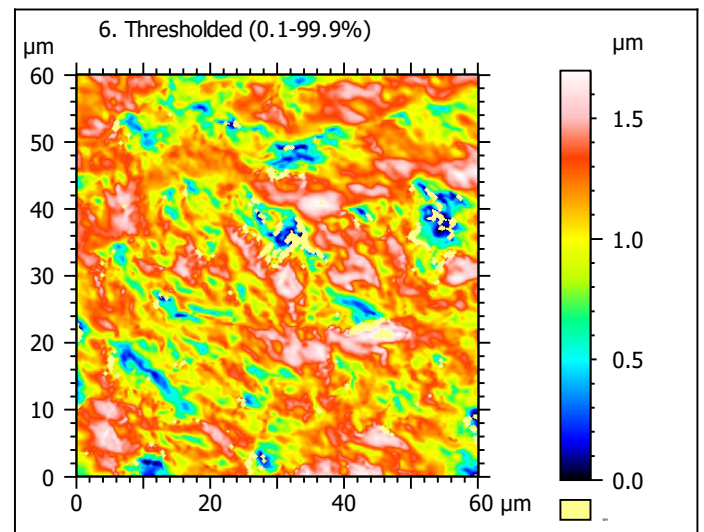
1. Acquired surface



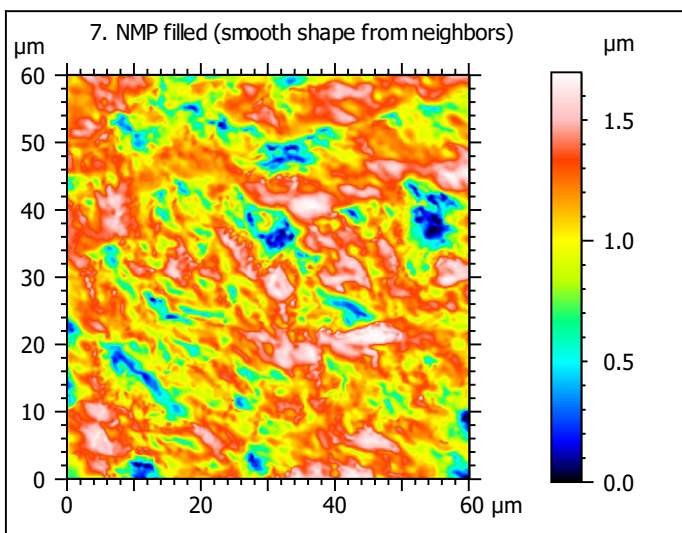
*Note that the surfaces have been preprocessed (mirrored in z and cut to 60x60  $\mu$ m) according to Winkler et al. (2019), PNAS 116: 1325-1330.*



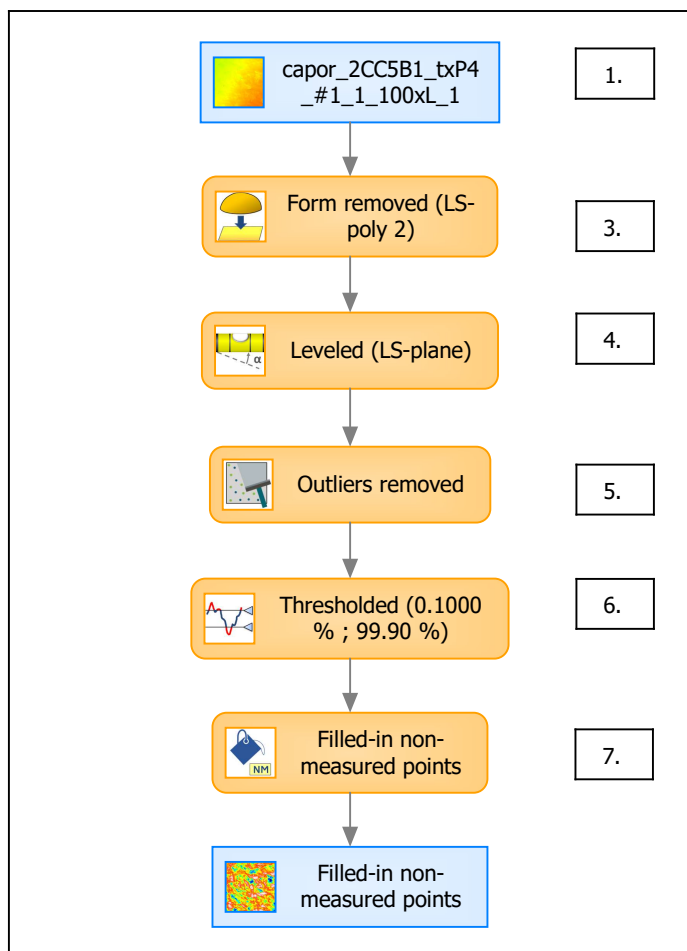
| Identity card    |  |
|------------------|--|
| Name:            | capor_2CC5B1_txP4_...e) > Outliers removed |
| Axis:            | Z  |
| NM-points ratio: | 2.499 % (3421 Pts)                         |



| Identity card    |  |
|------------------|--|
| Name:            | capor_2CC5B1_txP4_...0.1000 % ; 99.90 %) |
| Axis:            | Z  |
| NM-points ratio: | 2.693 % (3687 Pts)                       |

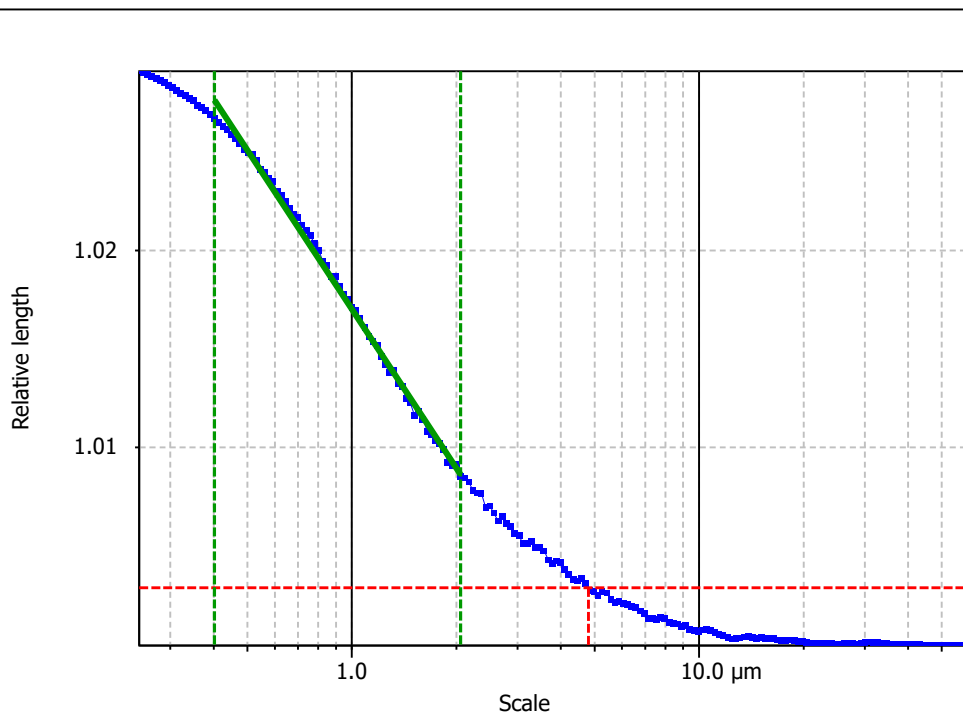


## B. Summary



### Identity card

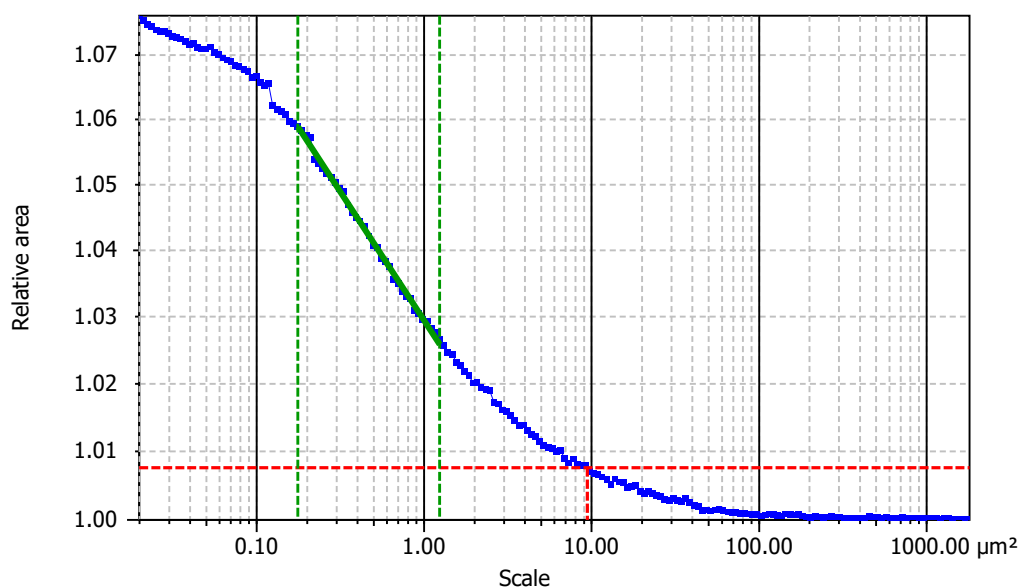
|                 |   |        |  |
|-----------------|---|--------|--|
| Name:           | capor_2CC5B1_txP4_#1_1_100xL_1 > Form removed (LS-poly 2...resholded (0.1000 % ; 99.90 %) > Filled-in non-measured points |        |  |
| Studiable type: | Surface   |        |  |
| <b>Axis:</b>    | <b>X</b>  |        |  |
| Length:         | 60.06   | μm     |  |
| Size:           | 370   | points |  |
| Spacing:        | 0.1628  | μm     |  |
| <b>Axis:</b>    | <b>Y</b>  |        |  |
| Length:         | 60.06   | μm     |  |
| Size:           | 370   | points |  |
| Spacing:        | 0.1628  | μm     |  |
| <b>Axis:</b>    | <b>Z</b>  |        |  |
| Layer type:     | Topography  |        |  |
| Length:         | 1.698   | μm     |  |
| Size:           | 3874  | digits |  |
| Spacing:        | 0.0004383   | μm     |  |

**Information**

|        |                     |
|--------|---------------------|
| Method | Length-scale (rows) |
|--------|---------------------|

**Parameters**

| Parameters | Value    | Unit | Comment                                      |
|------------|----------|------|--|
| epLsar     | 0.002171 |      | Length-scale anisotropy (Sfrax) (1.8 μm, 5°) |
| NewEplsar  | 0.01831  |      | Length-scale anisotropy (1.8 μm, 5°)         |

**Information**

|        |                           |
|--------|---------------------------|
| Method | Area-scale (four corners) |
|--------|---------------------------|

**Parameters**

| Parameters     | Value  | Unit            | Comment                         |
|----------------|--------|-----------------|---------------------------------|
| R <sup>2</sup> | 0.9969 |                 | Reg. coefficient R <sup>2</sup> |
| Asfc           | 16.22  |                 | Fractal complexity              |
| Smfc           | 0.4661 | μm <sup>2</sup> | Scale of max complexity         |
| HAsfc9         | 0.1809 |                 | Heterogeneity of Asfc (3x3)     |
| HAsfc81        | 0.3636 |                 | Heterogeneity of Asfc (9x9)     |